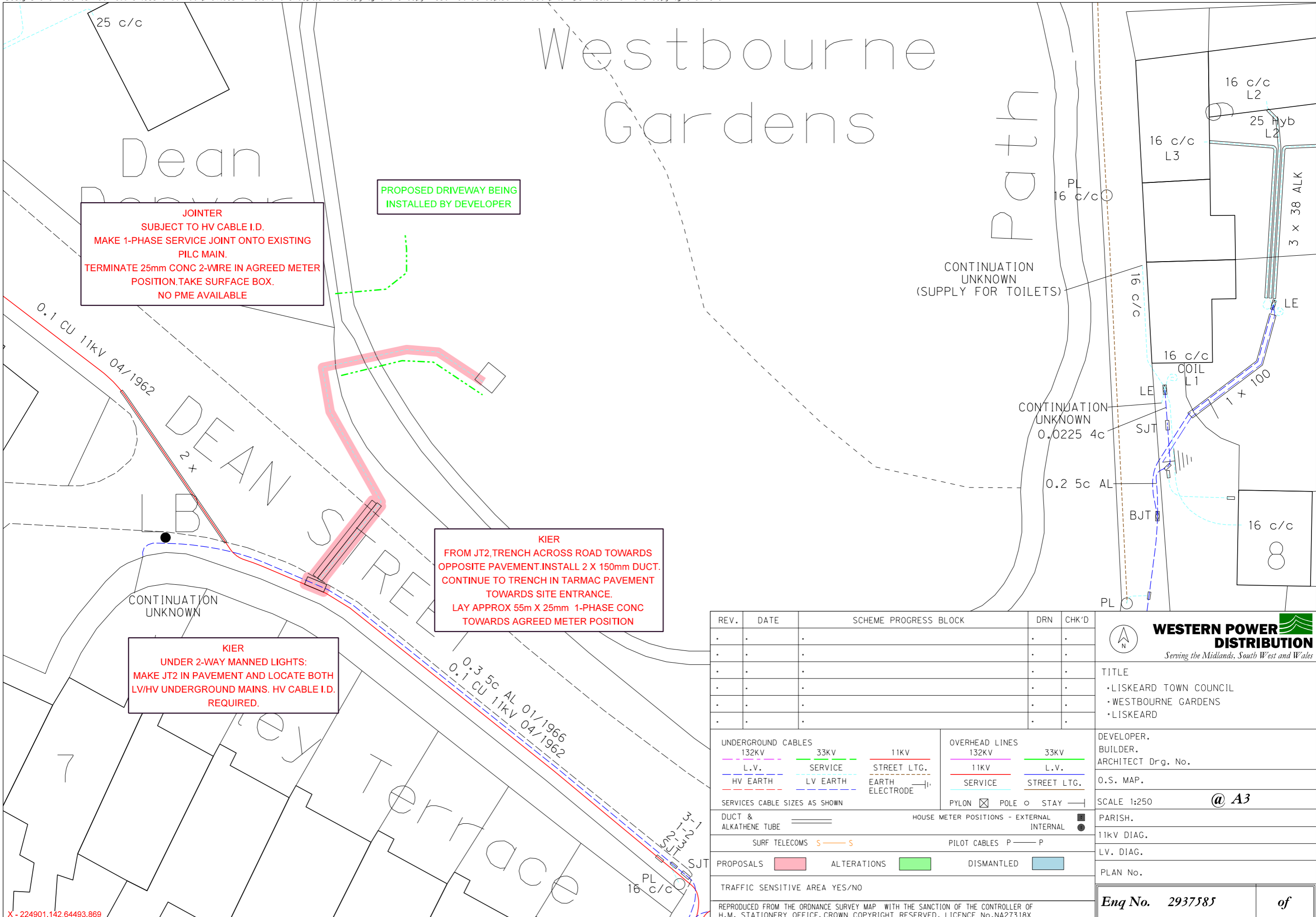


Information is given as a guide only and its accuracy cannot be guaranteed.

PLEASE NOTE: This plan ONLY shows assets owned by Western Power Distribution. Electricity assets owned by IDNO's (Independent Network Operators) MAY be present in this area.



**JOINTER**  
 SUBJECT TO HV CABLE I.D.  
 MAKE 1-PHASE SERVICE JOINT ONTO EXISTING PILC MAIN.  
 TERMINATE 25mm CONC 2-WIRE IN AGREED METER POSITION. TAKE SURFACE BOX.  
 NO PME AVAILABLE

PROPOSED DRIVEWAY BEING INSTALLED BY DEVELOPER

**KIER**  
 FROM JT2, TRENCH ACROSS ROAD TOWARDS OPPOSITE PAVEMENT. INSTALL 2 X 150mm DUCT. CONTINUE TO TRENCH IN TARMAC PAVEMENT TOWARDS SITE ENTRANCE.  
 LAY APPROX 55m X 25mm 1-PHASE CONC TOWARDS AGREED METER POSITION

**KIER**  
 UNDER 2-WAY MANNED LIGHTS: MAKE JT2 IN PAVEMENT AND LOCATE BOTH LV/HV UNDERGROUND MAINS. HV CABLE I.D. REQUIRED.

REV.	DATE	SCHEME PROGRESS BLOCK	DRN	CHK'D
•	•	•	•	•
•	•	•	•	•
•	•	•	•	•
•	•	•	•	•
•	•	•	•	•
•	•	•	•	•

**WESTERN POWER DISTRIBUTION**  
*Serving the Midlands, South West and Wales*

TITLE  
 • LISKEARD TOWN COUNCIL  
 • WESTBOURNE GARDENS  
 • LISKEARD

<b>UNDERGROUND CABLES</b> 132KV: L.V. (red), HV EARTH (blue) 33KV: SERVICE (green), LV EARTH (blue) 11KV: STREET LTG. (red), EARTH ELECTRODE (blue)	<b>OVERHEAD LINES</b> 132KV: 11KV (red), SERVICE (green) 33KV: L.V. (green), STREET LTG. (red)
SERVICES CABLE SIZES AS SHOWN DUCT & ALKATHENE TUBE (red line) SURF TELECOMS (orange line)	PYLON (square symbol), POLE (circle symbol), STAY (dash symbol) HOUSE METER POSITIONS - EXTERNAL (square symbol), INTERNAL (circle symbol) PILOT CABLES P (dash symbol)
PROPOSALS (pink box), ALTERATIONS (green box), DISMANTLED (blue box)	TRAFFIC SENSITIVE AREA YES/NO

DEVELOPER.  
 BUILDER.  
 ARCHITECT Drg. No.  
 O.S. MAP.  
 SCALE 1:250 @ A3  
 PARISH.  
 11KV DIAG.  
 LV. DIAG.  
 PLAN No.