

making space for nature
in Cornish towns



Information Classification: PUBLIC

MS4N Summary of Liskeard Sites

Alex Denney, Project Officer



making space for nature in Cornish towns



Castle Park

- 2.4 Hectares
- Mixed use park with amenity grass areas, play equipment, picnic benches and footpaths.
- Currently being devolved to the Town Council.



making space for nature in Cornish towns



Information Classification: PUBLIC

Before: Early 2021



After: Summer 2022



making space for nature in Cornish towns



Information Classification: PUBLIC

Before: Early 2021



After: Summer 2022



making space for nature in Cornish towns



Highlights

- 37 fruit trees
- 841m² of wildflower meadows
- Improved access and paths
- 430m² of pollinator friendly shrubs
- 4 new picnic benches
- Awarded a Building with Nature award

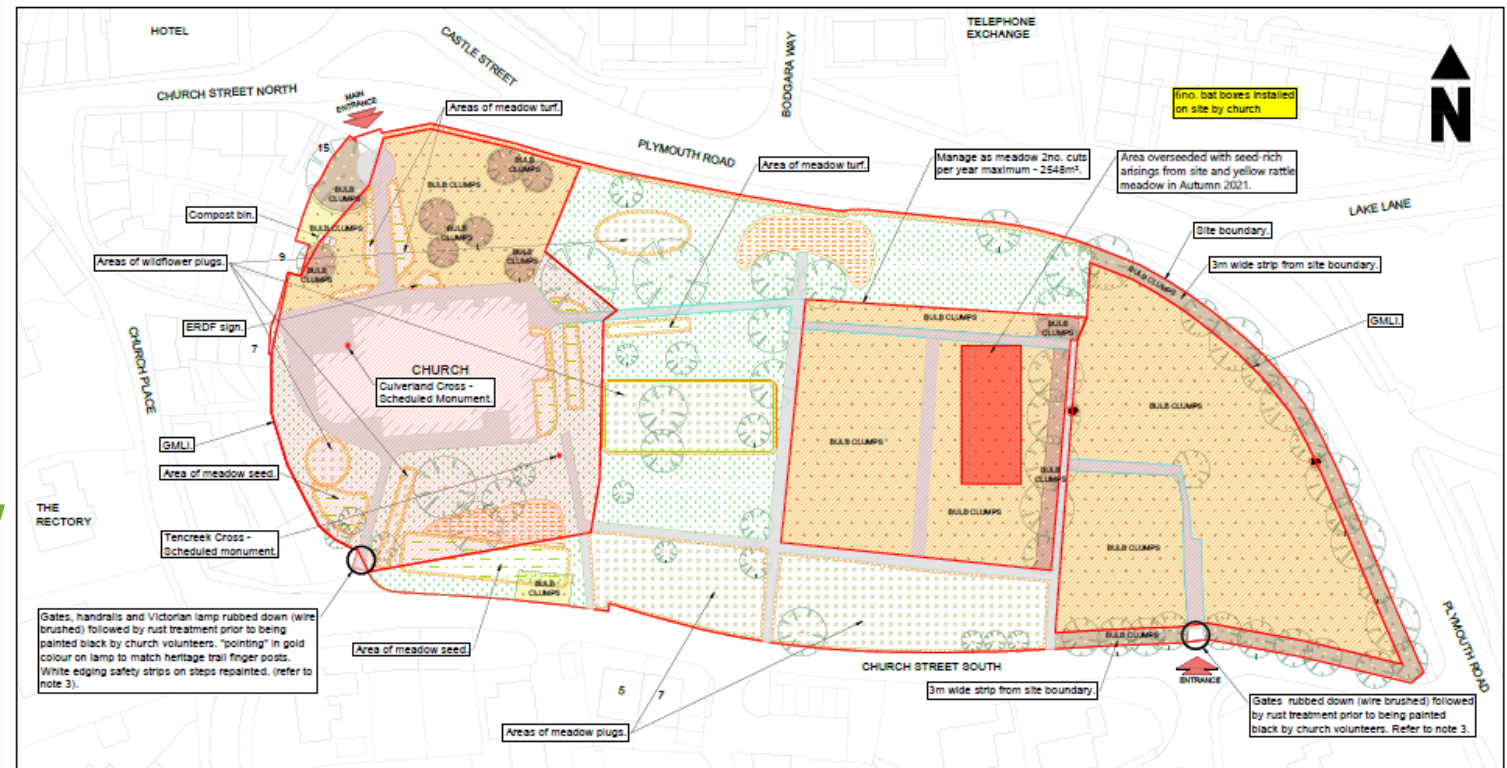


making space for nature in Cornish towns



St Martins Churchyard

- 1.5 Hectares
- Management plan developed along side meadow seeding to transform area into a biodiverse wild meadow churchyard.



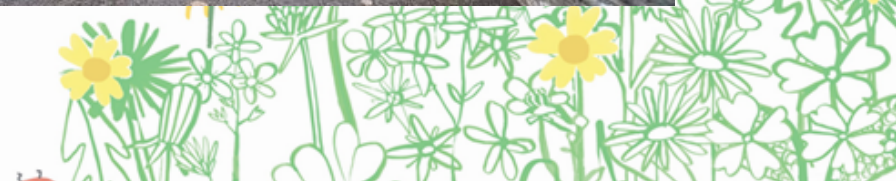
making space for nature in Cornish towns



Information Classification: PUBLIC

Before: Early 2020

After: Summer 2022



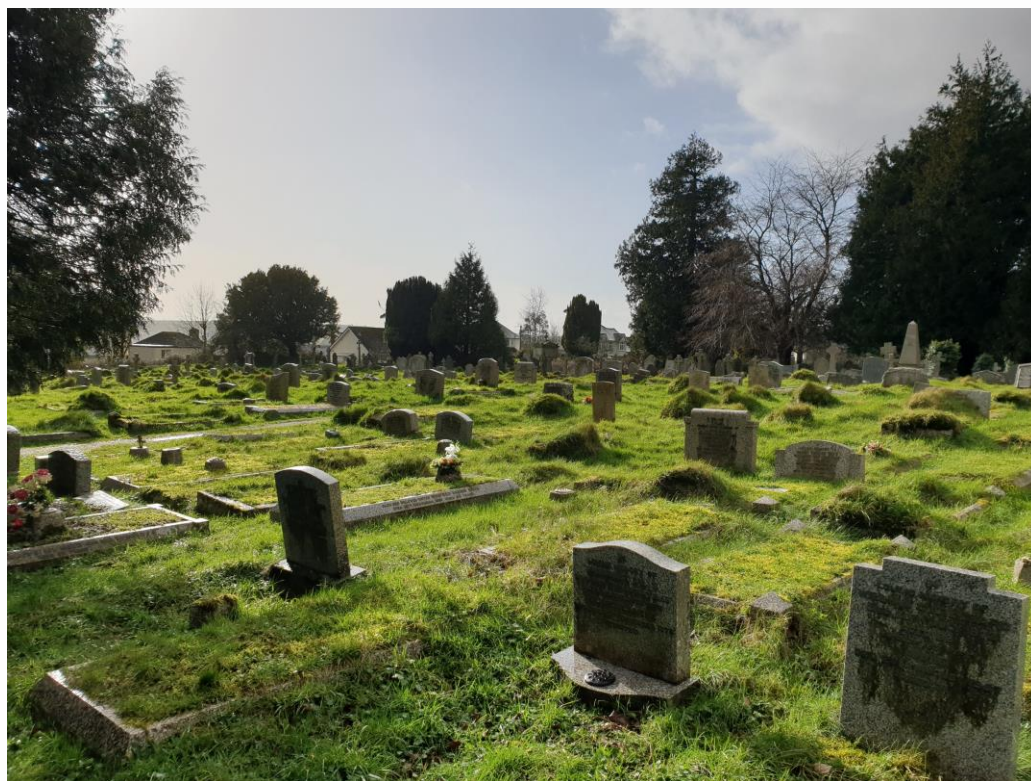
making space for nature in Cornish towns



Information Classification: PUBLIC

Before: Early 2020

After: Summer 2022



making space for nature in Cornish towns



Highlights

- 2,548m² of wildflower meadows, created from turf, seed, plugs and green hay.
- Improved biodiversity, grasshoppers, yellow meadow ants, native meadow plant species such as yellow rattle.
- Old metal gates cleaned and repainted by volunteers

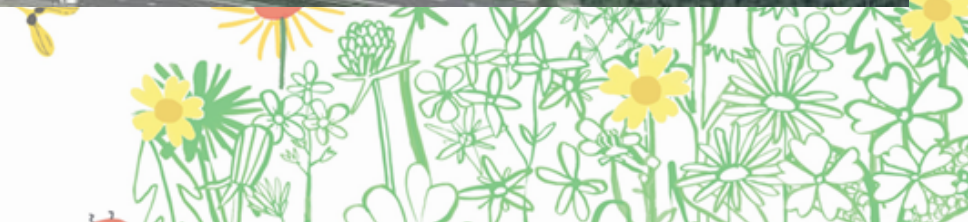


making space for nature in Cornish towns



Lanchard Woods

- 1.8 Hectares
- Area of woodland with a stream flowing through the centre
- Developed improved environmental management plan
- Countryside asset



making space for nature in Cornish towns



Before: Early 2020



After: Late 2020



making space for nature in Cornish towns



Information Classification: PUBLIC

Before: Early 2020



After: Late 2020



making space for nature in Cornish towns

Information Classification: PUBLIC



Highlights

- Improved access.
- Old oak awarded veteran tree status.
- General tidy up and removal of waste, with help from local volunteers.



making space for nature in Cornish towns

Volunteering

- Local people have been engaged across all sites. But mostly at Castle Park and Lanchard Woods
- Community toolbox installed in the Scout hut area at Castle Park.
- Scything days and workshops held in Lanchard Woods and Castle Park



making space for nature in Cornish towns



Post Construction Survey of Castle Park, Summary:

- Surveys were sent to 158 addresses in July 2021 and 24 were returned, a response rate of 15.18%
- Overall, over 60% of participants that returned surveys were pleased with the works that had taken place and thought that the space was more welcoming as a result of the works.
- The most common concern was regarding vandalism, however since this survey was sent out we haven't had any serious issues of vandalism other than the odd plant taken from the beds



making space for nature in Cornish towns



Post Construction Survey of Castle Park, Comments:

A job well done long over due but worth the wait.

I think the park looks really lovely (all of it). Thank you

My garden backs onto Castle Park and I have lived here over 40 years. I really appreciate the new paths, benches and the new landscaping.

It is so nice to have seats in the park now and lots of trees and plants. Lovely to sit on the way back from town

I have lived here for 29 years, my house is next to the park. We have had lots of problems in the park but hopefully that will now end and people will be able to enjoy it



making space for nature in Cornish towns



Information Classification: PUBLIC

Questions?

