



LISKEARD COUNCIL
WORKING FOR YOU

Liskeard Public Hall Technical Rider

Updated 03/03/2025

Audio System

FOH Control

Allen & Heath SQ6 + 1 x DX168 Stage box

FOH Speakers

3 x dB Technologies DVA M2M+M2S
active line array modules (6 boxes) per side (flown)
2 x dB Technologies SUB 615 active 15" subwoofer

Foldback

4 x db Technologies FMX10 10" Active floor monitors
2 x Mackie Active SRM 450 side fills
1 x Mackie Active SRM 450 + Mackie Active SRS 1500 Subwoofer drum fill

Mics

2 x Proel HCM03 Head worn mic
2 x JTS CM 201 Lapel mic
3 x JTS PT 920 BG Belt pack transmitter
3 x JTS MH8800GI Hand held radio mic
3 x JTS duel radio receivers (6 channels)
5 x Shure SM58
1 x Shure C606 (switched)
3 x AKG D310S (switched)
1 x Audix F5 Dynamic Microphone
3 x Audix F2 Dynamic Microphones
1 x Audix F6 Dynamic Microphone
2 x Audix F9 Condenser Microphones

Ancillary

2 x SubZero SZ-DIA1 Active mono DI box
1 x SubZero SZ-DIP2 Passive stereo DI box



LISKEARD COUNCIL
WORKING FOR YOU

Liskeard Public Hall Technical Rider

Updated 03/03/2025

Audio System

Mic Stands

7 x Boom
5 x Straight
1 x Short flexi

Cabling

Stage to FOH via CAT6 Allen & Heath DX 168

6 x 3m XLR/XLR
2 x 5m XLR/XLR
6 x 6m XLR/XLR
2 x 8m XLR/XLR
6 x 10m XLR/XLR
2 x 9m mXLR/1/4" jack
2 x 9m fXLR/1/4" jack
1 x 15m 8 xlr channel stage box

Playback

We have a windows laptop available for you to load your digital media on which can then be triggered from Windows Media Player. Alternatively the Allen & Heath SQ6 has playback facilities for mono or stereo, uncompressed *.wav files of 44.1, 48 or 96kHz and 16 or 24 bit.

They must not contain any headers (such as BWF) or data (such as markers).

Projection

Optoma 4k DLP Projector (flown)
HDMI input via CAT6 convertor from FOH control or stage.
Fixed position 6m x 4m Projector screen on stage. Electric fly in/out operated on stage.



LISKEARD COUNCIL
WORKING FOR YOU

Liskeard Public Hall Technical Rider

Updated 03/03/2025

Lighting System

Control

Zero 88 1llusion 120

(Please do not add to or change the sub-masters on page one. These are settings required by the Council).

Fixtures

12 x 500w PAR lanterns

2x 600w profile spots

10 x 26", 600w profile spots

12 x 1200w fresnels

8 x 500w Floods

The performance lighting system installed in the Public Hall has been designed as a versatile general purpose rig capable of supporting exhibitions, seminars and performances on catwalk or "in the round" as well as stage productions.

It comprises 136 separately wired circuits feeding sockets on seven overhead bars, six side bars and four low level outlets on stage.

These circuits are patched into 72 dimmer channels, each able to supply two circuits with each dimmer channel having a capacity of 2,4kW. Each dimmer rack is supplied through its own MCB, four from each phase of the supply and there is a three phase RCD to protect the entire system.

THE LOAD MUST NOT EXCEED 15KW PER PHASE and should be balanced as far as possible whilst minimising the cross phase connection of adjacent circuits.

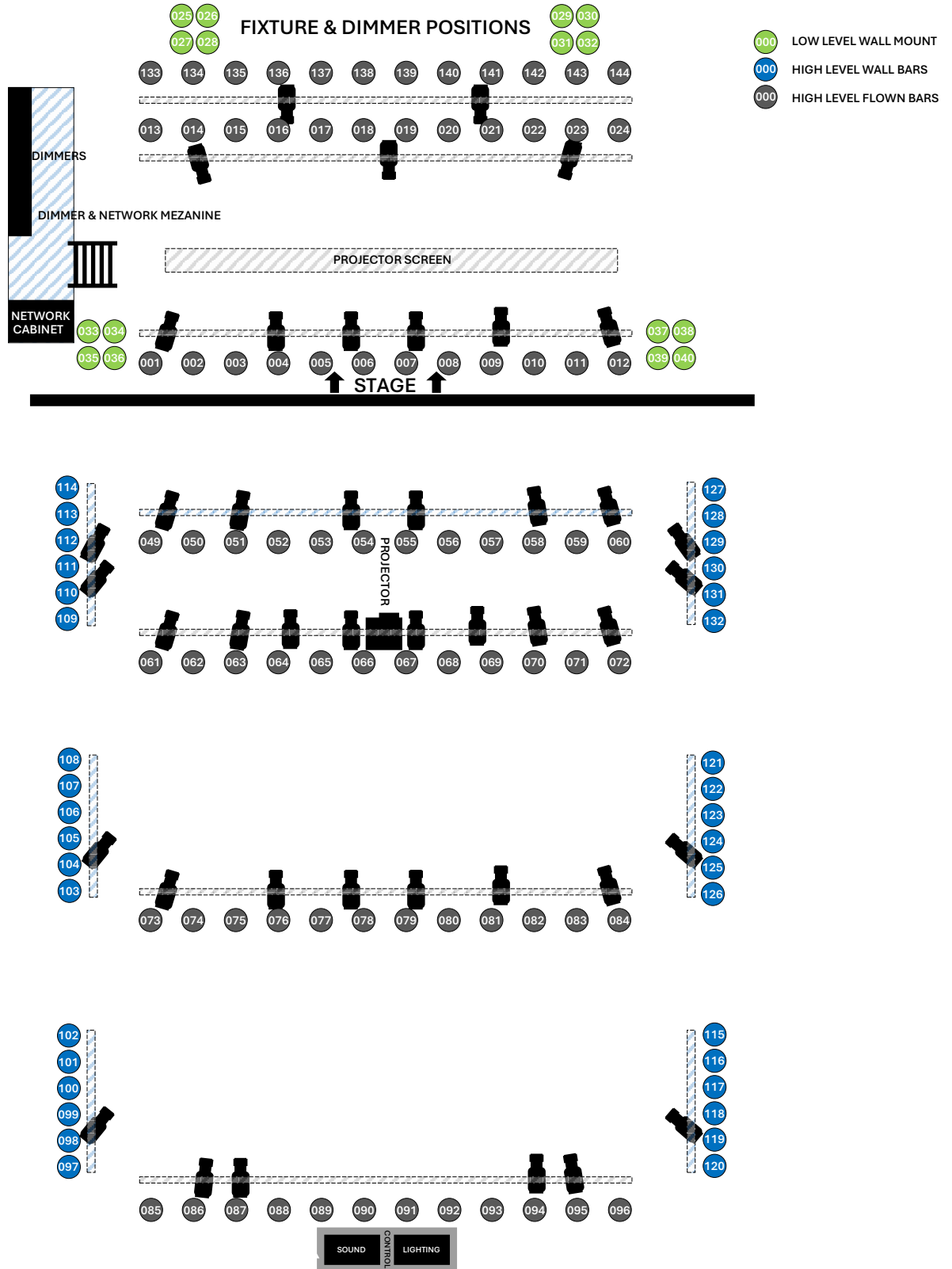
If you adjust any of the fixtures, please note their original orientation and return them to this on completion. If these lights do not suffice for your needs, there is a selection of other equipment that you may use.



LISKEARD COUNCIL
WORKING FOR YOU

Liskeard Public Hall Technical Rider

Updated 03/03/2025



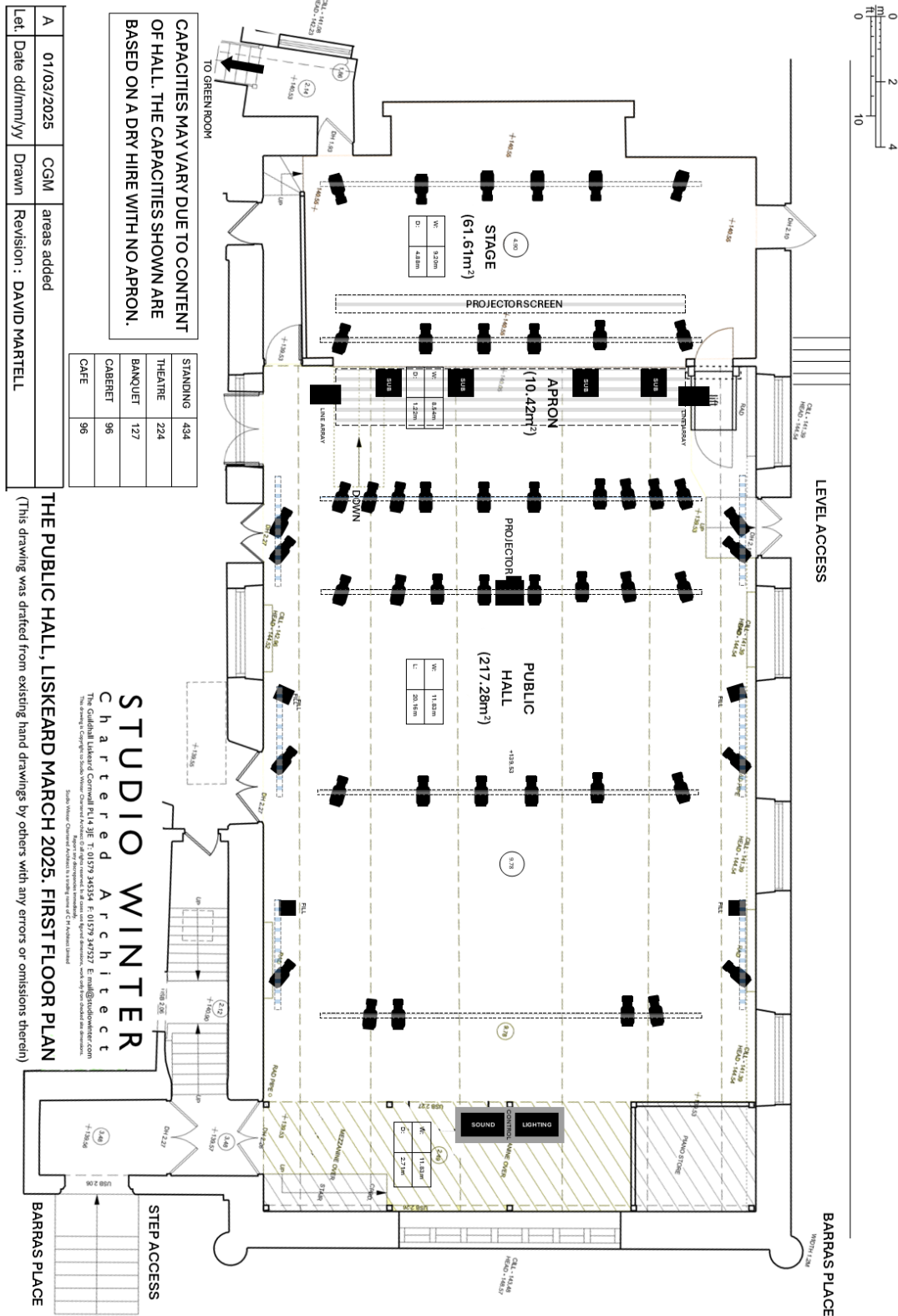
For further technical enquiries please contact David Martell at Liskeard Town Council. 3-5 West street, Liskeard PL14 6BW
E: caretakers@liskeard.gov.uk Or between the hours of 09:00 to 17:00 T: 01579 345407 M: 07940 929903



LISKEARD COUNCIL
WORKING FOR YOU

Liskeard Public Hall Technical Rider

Updated 03/03/2025



For further technical enquiries please contact David Martell at Liskeard Town Council. 3-5 West street, Liskeard PL14 6BW
E: caretakers@liskeard.gov.uk Or between the hours of 09:00 to 17:00 T: 01579 345407 M: 07940 929903

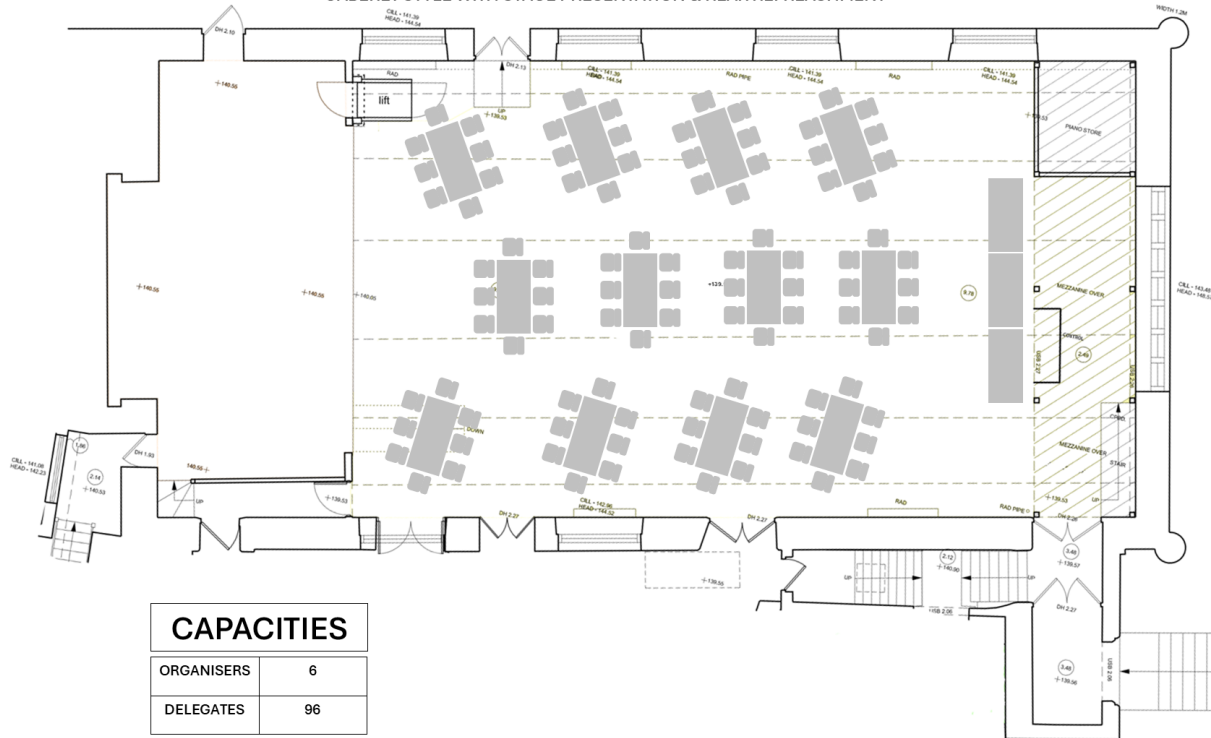


LISKEARD COUNCIL
WORKING FOR YOU

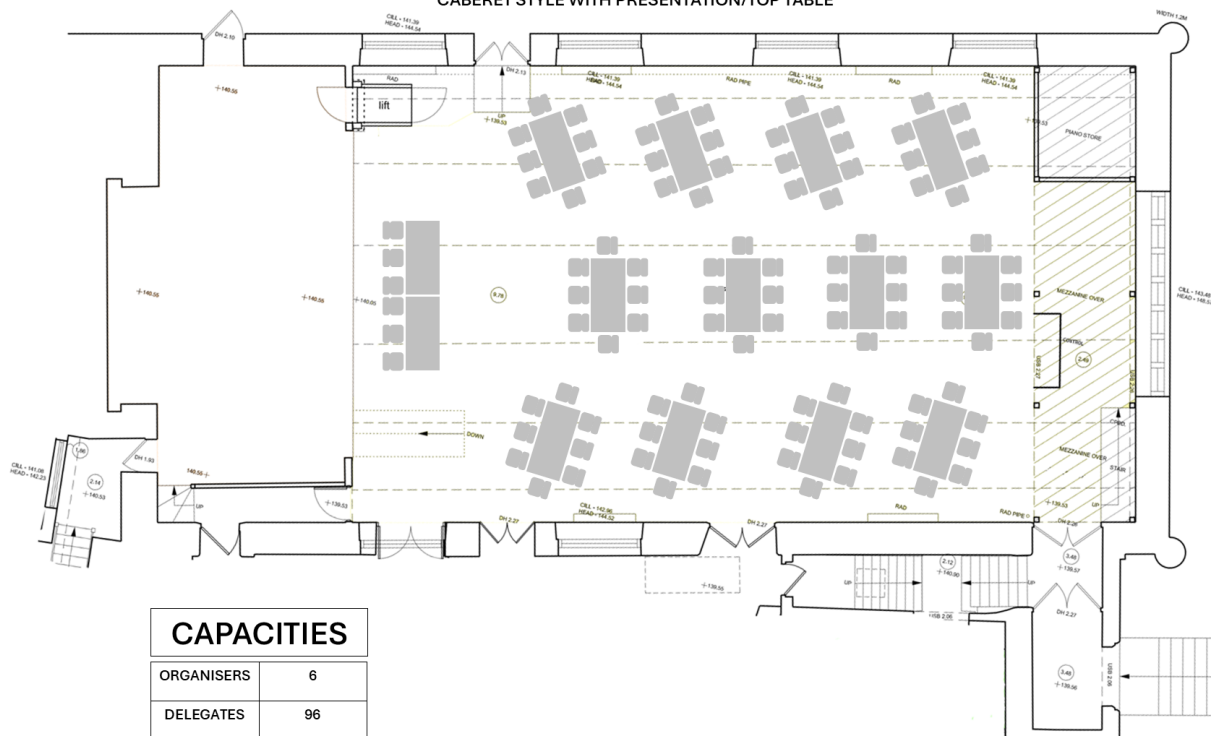
Liskeard Public Hall Technical Rider

Updated 03/03/2025

CABERET STYLE WITH STAGE PRESENTATION & REAR REFRESHMENT



CABERET STYLE WITH PRESENTATION/TOP TABLE



For further technical enquiries please contact David Martell at Liskeard Town Council. 3-5 West street, Liskeard PL14 6BW
E: caretakers@liskeard.gov.uk Or between the hours of 09:00 to 17:00 T: 01579 345407 M: 07940 929903

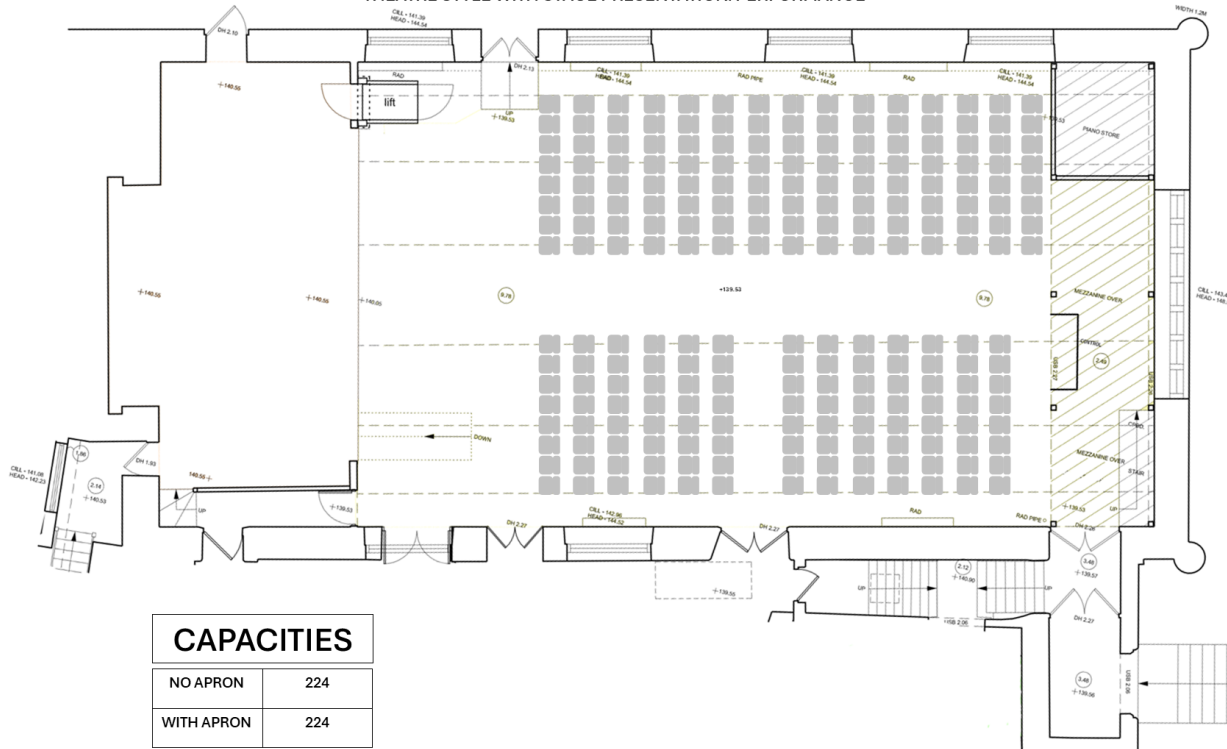


LISKEARD COUNCIL
WORKING FOR YOU

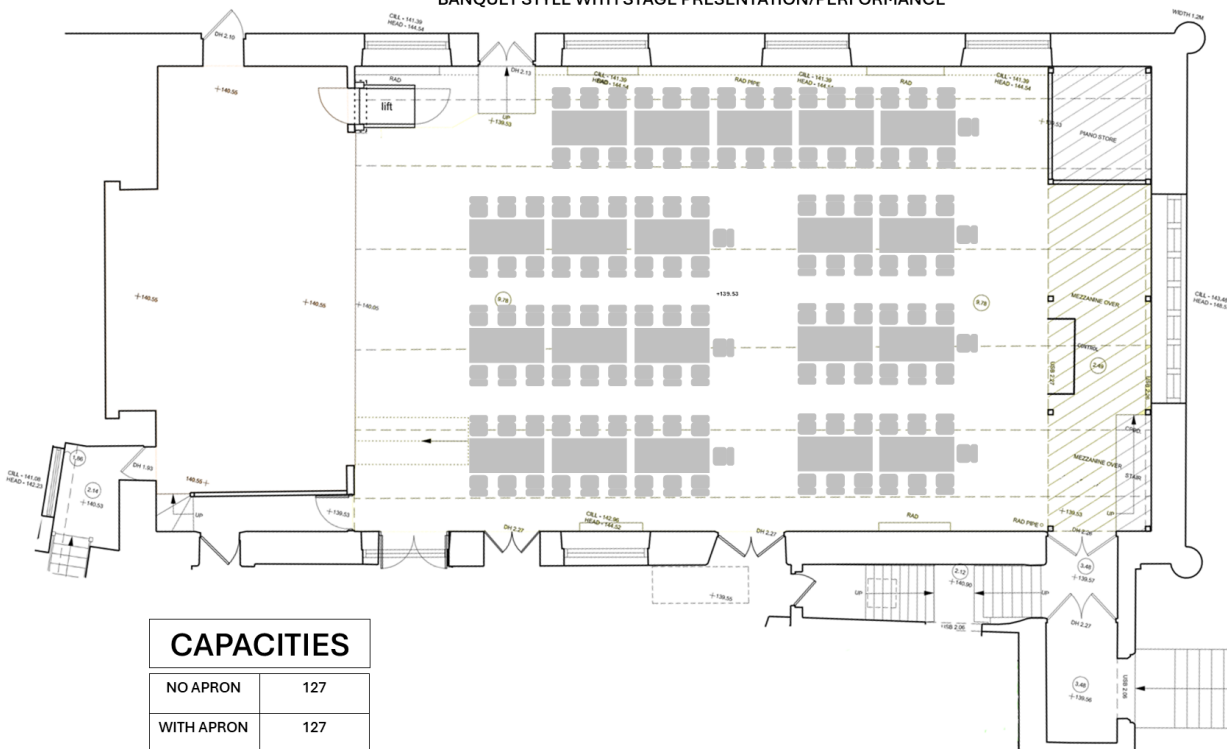
Liskeard Public Hall Technical Rider

Updated 03/03/2025

THEATRE STYLE WITH STAGE PRESENTATION/PERFORMANCE



BANQUET STYLE WITH STAGE PRESENTATION/PERFORMANCE



For further technical enquiries please contact David Martell at Liskeard Town Council. 3-5 West street, Liskeard PL14 6BW
E: caretakers@liskeard.gov.uk Or between the hours of 09:00 to 17:00 T: 01579 345407 M: 07940 929903

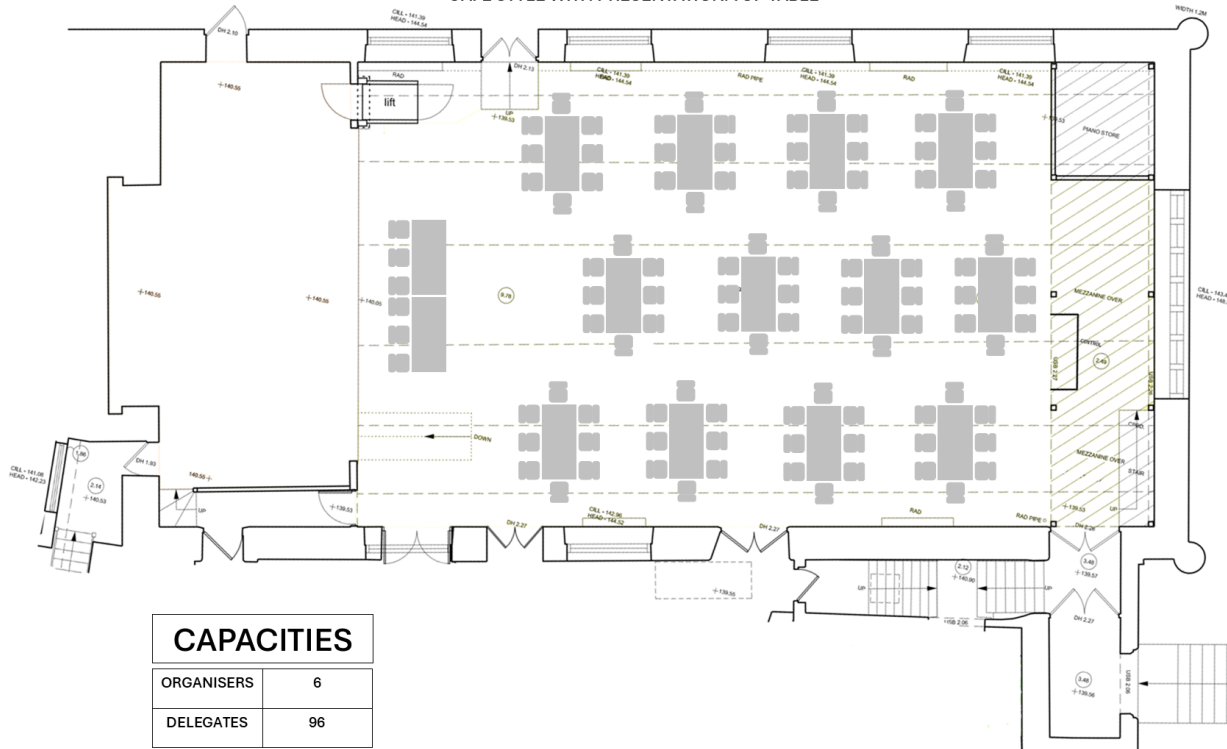


LISKEARD COUNCIL
WORKING FOR YOU

Liskeard Public Hall Technical Rider

Updated 03/03/2025

CAFÉ STYLE WITH PRESENTATION/TOP TABLE



STANDING WITH STAGE PERFORMANCE



For further technical enquiries please contact David Martell at Liskeard Town Council. 3-5 West street, Liskeard PL14 6BW
E: caretakers@liskeard.gov.uk Or between the hours of 09:00 to 17:00 T: 01579 345407 M: 07940 929903