

## **Cornwall Post 2021 Division Boundary Review**

Liskeard Town Council has considered 5 possible Cornwall Council division options for post 2021. At its 30th January 2018 meeting Liskeard Town Council approved the attached option (map and electorate stats projection 2023) for submission. The Liskeard Parish with a projected 7,927 electorate has too many electors for a single division. The Council has taken into account the LGBC guidance regarding the need to achieve 5,163 electors per division (plus or minus 10%). Two immediately adjacent Parishes are proposed for inclusion Menheniot and Dobwalls. These provide the correct numbers to meet the electoral equity requirements and are natural extensions of Liskeard.

The relevant electoral equity figures are achieved as follows:

Post 2021 division possible name Liskeard East (5,247 electorate comprising) - Liskeard Parish Polling Districts EXE1 1,115 electorate and EXE2 2,676 electorate combined with Menheniot Parish (composed of 2 Polling Districts EMT1 1,146 electorate and EMT2 310).

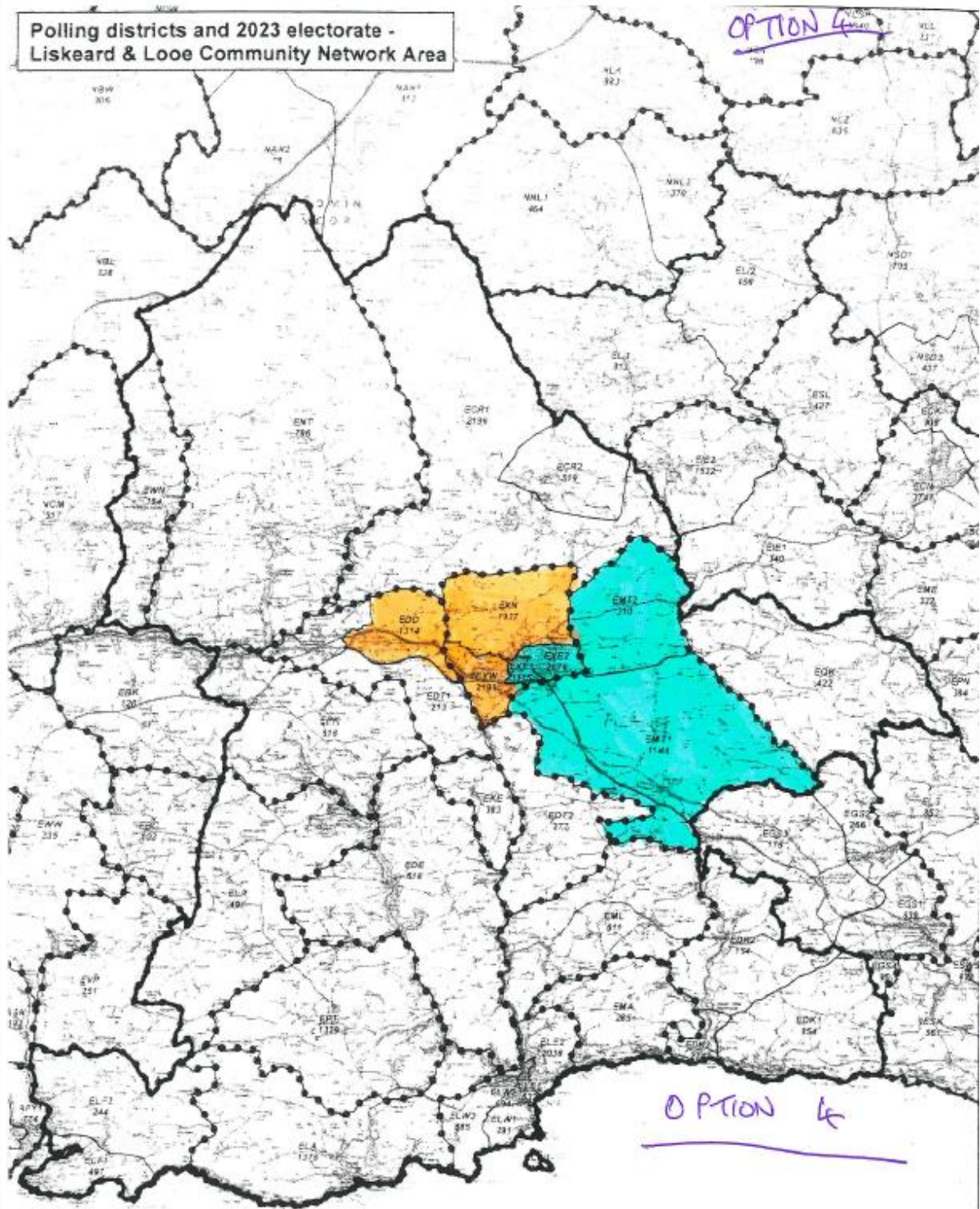
Post 2021 division possible name Liskeard West (5,450 electorate comprising) – Liskeard Parish Polling Districts EXN 1,937 and EXW 2,199 electorate combined with Dobwalls Parish Polling District EDD 1,314 electorate). \*The Trewidland Polling Districts EDT1 and EDT2 have not been included as they would exceed the LGBC electorate equality guidance and are not as natural a community as Dobwalls in respect to Liskeard.

In both cases the Parishes are not only immediately adjacent to the town but the settlement pattern has meant that the built environment already extends beyond the Liskeard Parish boundary. The Liskeard Tavern Premier Inn, Liskeard Argos and Liskeard B & M stores are all within the Menheniot Parish and a recent planning consent for over 200 houses and 6 hectares of employment site extend still further the south eastern line of development which follows the A38 trunkroad. To the west a significant element of the Moorswater Industrial Estate, Liskeard and the railway facility that serves it, is in fact in the Dobwalls Parish which follows the route of the A38 trunk road. Furthermore, the electorate of these neighbouring parishes look to Liskeard for the provision of health services (doctors, hospital, dentists, vets) education provision (primary schools feed into the Liskeard School and Community College), Council services (Unitary Cornwall Council offices at Luxstowe House), employment (Liskeard Business Park, Miller Business Park, Moorswater Industrial Estate and Heathlands Business Park), retail with both edge of town supermarkets and a traditional town centre with many independent shops. The town also has the Lux Park Leisure Centre which adjacent football, rugby and cricket pitches.

This proposal is commended to the Commission for its consideration.

**Polling districts and 2023 electorate -  
Liskeard & Looe Community Network Area**

OPTION 4



OPTION 4

Legend	
	Parish Boundary
	Community Network Area

OPTION 4

Community Network Area - Liskeard and Looe	
2016 electorate - 26046	2023 forecast electorate - 27556

	Council size		
	123	99	87
Cornwall average electorate per Councillor (2023)	3652	4537	5163
No. of Cornwall Councillors for Network Area	8	6	5
Electorate per Councillor for Network Area (2023)	3445	4593	5511

**Parish Council electorate data for this Community Network Area**

Parish - Deviock		
Polling district	Parish ward	2023 Electorate
EDK1	Dowderry	854
EDK2	Hessenford	154
EDK3	Seaton	274

Parish - Dobwalls and Trewidland		
Polling district	Parish ward	2023 Electorate
EDD	Dobwalls	1314
EDT1	Trewidland	213
EDT2	Trewidland	277

Parish - Duloe		
Polling district	Parish ward	2023 Electorate
EDE	N/A	618

Parish - Lanreath		
Polling district	Parish ward	2023 Electorate
ELR	N/A	491

Parish - Polperro (Lansallos)		
Polling district	Parish ward	2023 Electorate
ELA	N/A	1376

Parish - Lanteglos by Fowey		
Polling district	Parish ward	2023 Electorate
ELF1	N/A	497
ELF2	N/A	244

Parish - Liskeard		
Polling district	Parish ward	2023 Electorate
EKE1	Liskeard East	1115
EKE2	Liskeard East	2676
EXN	Liskeard North	1937
EXW	Liskeard West	2199

Parish - Looe		
Polling district	Parish ward	2023 Electorate
ELE1	Looe East	632
ELE2	Looe East	2038
ELW1	Looe West	291
ELW2	Looe West	694
ELW3	Looe West	885

Parish - Menheniot		
Polling district	Parish ward	2023 Electorate
EMT1	N/A	1146
EMT2	N/A	310

Parish - Morval		
Polling district	Parish ward	2023 Electorate
EML	N/A	611

Parish - Pelynt		
Polling district	Parish ward	2023 Electorate
EPT	N/A	1329

Parish - Quethlock		
Polling district	Parish ward	2023 Electorate
EQK	N/A	422

Parish - St Cleer		
Polling district	Parish ward	2023 Electorate
ECR1	N/A	2186
ECR2	N/A	519

Parish - St Keyne		
Polling district	Parish ward	2023 Electorate
EKE	N/A	383

Parish - St Martin-by-Looe		
Polling district	Parish ward	2023 Electorate
EMA	N/A	285

Parish - St Neot		
Polling district	Parish ward	2023 Electorate
ENT	N/A	786

Parish - St Pinnock		
Polling district	Parish ward	2023 Electorate
EPK	N/A	616

Parish - Warleggan		
Polling district	Parish ward	2023 Electorate
EWN	N/A	184

LISKEARD

LISKEARD EAST  
5,247

LISKEARD WEST  
5,450

OPTION 4

10,697 TOTAL