

# On site **BRADY**-newsletter

**BRADY**

CONSTRUCTION SERVICES

Issue Two - Nov 2021 | Liskeard Cattle Market Digital and Creative Workspace



Visual of the new building



**Sam Stonestreet**  
Site Manager

Welcome to the second edition of Brady Construction Services' newsletter.

These communications will be distributed regularly to help keep you informed on progress of the project and as our neighbour during the construction phase what you expect to see on site. We are delighted to have the opportunity to deliver this project for **Cornwall Council** which is **part-funded by the European Regional Development Fund**. We will use our extensive experience of undertaking similar schemes to ensure minimal disturbances to the neighbourhood.

Brady Construction Services are an established main contractor with offices in Cornwall and Devon. We specialise in construction of new build commercial and industrial projects and also refurbishment of existing structures. Our vision is 'to help sustain and create communities that work well now and, in the future'.

The project is being overseen by our Site Manager Sam Stonestreet. If you have any queries concerning the construction process, please feel free to contact Sam T. 07949 164520 E. [sam.stonestreet@bradycs.co.uk](mailto:sam.stonestreet@bradycs.co.uk)

## The Project

The construction of a new building, called The Workshed, which will provide 17 flexible units and collaborative workspace aimed at businesses working in the digital and creative industries. There is also a covered Market Canopy structure, large external market area, cycle storage and landscaped seating areas.

## Site Set up

The site is fully secured with a solid hoarding. There will be vehicle gates to the north elevation which will remain secured throughout the project and there will be 4 temporary welfare cabins sited within the site boundary providing the workforce with all the facilities required to carry out the project.

## Disruption

Construction can be messy, noisy and disruptive. However, Brady Construction Services have many years of experience at ensuring disruption is minimized for our neighbours and we try to ensure minimal impact to you and your business, as such we welcome your feedback to ensure a harmonious relationship for our time on site.



Site Manager – Sam Stonestreet T. 07949 164520 E. [sam.stonestreet@bradycs.co.uk](mailto:sam.stonestreet@bradycs.co.uk)  
1-2 Fairpark Road, Liskeard PL14 4BA [www.bradycs.co.uk](http://www.bradycs.co.uk)

# On site **BRADY**-newsletter

**BRADY**

CONSTRUCTION SERVICES

Issue Two - Nov 2021 | Liskeard Cattle Market Digital and Creative Workspace

## What's next on site?

Works are progressing well recently and we are still on programme to complete the project on time.

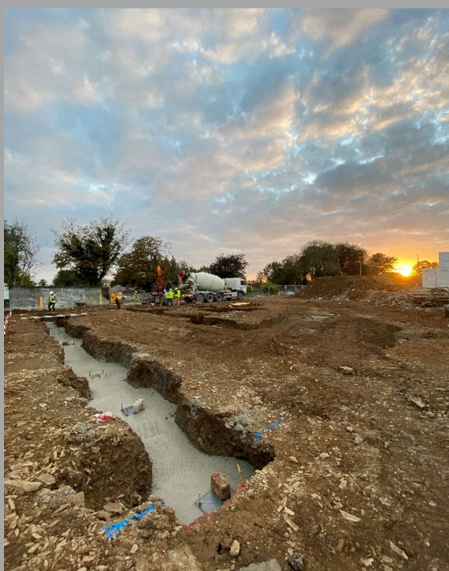
We have poured the Workshed foundations and will be putting up the steel frame over the next few weeks. This will require a large crane to be on site which can be viewed through the new viewing window opposite Bob's Tool Box.

We will be continuing with groundworks for the access road through the middle of site and the parking areas. As well as installing all of the drainage to the building and getting ready for the Ground Floor concrete slab.

There will be a slight increase in traffic to and from site as well as more workers. Brady CS will continue to maintain clean roads around site and provide local parking areas for our workforce.

## Minimising Ecological Impact

The site has been thoroughly assessed by an ecologist, who has helped to create a plan that will protect and preserve the wildlife currently inhabiting the site. There is a fantastic landscaping plan for the development with new trees and fauna for wildlife to re-establish itself once they become established.



## Disruption Early Forecast Warnings

Deliveries to site will be ongoing throughout the project but these will be managed with pre-booking for all deliveries, strict delivery time windows and a strict 'No waiting to unload' policy to help minimize disruption.

The continued excavation works and steel construction will emit some site noise but Brady CS will ensure these levels are controlled and disruption is kept to a minimum.

## Health & Safety

The health and safety of you, your family, our staff, our workers and the general public is of the highest importance. Please feel free to arrange a visit to the site via an appointment with the site manager. Children tend to have a fascination with building sites, if you have children please ensure they are aware of the dangers and do not enter the site.

**Building sites are dangerous places –  
do not enter!**



Site Manager – Sam Stonestreet T. 07949 164520 E.sam.stonestreet@bradycs.co.uk  
1-2 Fairpark Road, Liskeard PL14 4BA [www.bradycs.co.uk](http://www.bradycs.co.uk)