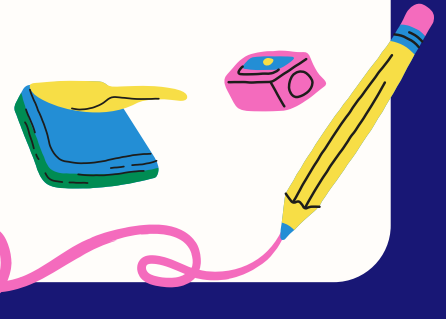




Parent Steering Group News



Do you allow your child out by themselves? Did you know?

At the moment, Castle Park is not ok for very young children to be in by themselves.

There are lots of older, boisterous children or adults who may be drinking and often broken glass and needles.

Please ensure there is a responsible adult with them.



Meeting 15th June 2022 Castle Park

We met to talk about issues that are raising their head at Castle Park. The pastoral team in school have asked the children where they feel safe and unsafe in and around school and lots of children do not feel safe at Castle Park.

This is a problem!

We talked about what we could do to help them.

This newsletter is to let you know what we might do about it!



What can we do about it?

Turn over for an outline of some of our ideas to make Castle Park a safer place for our children to play. It would be great if you could help.



What we plan to do...



Approach the council for support in signage that lets people know how to report anti-social behaviour, or get help for a child they are worried about.



Make sure you are all aware of some of the dangers we have seen in and around Liskeard, so that you are informed and can stay safe.



Work with other schools to see if we can get the children to take some responsibility for looking after each other at the park. Do they know how scared the littles ones are?



Work with the town and parish council to see about CCTV and to find out if Castle Park is an alcohol-free zone.



Let people know that they can report anti-social behaviour to schools, who can support with addressing poor behaviour.



Set up a parent ambassador group for any parent that needs support or help. This might be if your child has special needs, or if you just would like some company. We can meet for regular coffees and chats.



Let us know if you think of anything else by emailing Mrs Soady at rsoady@stbarnabasmat.com