

Visitor Data 2016

**Visitor Numbers**

	Adults	Children	Other	Total	Total excl 'other'	Cummulative
January	19	1	0	20	<b>20</b>	20
February	229	120	10	359	<b>349</b>	369
March	285	41	6	332	<b>326</b>	695
April	292	67	70	429	<b>359</b>	1054
May	267	30	0	297	<b>297</b>	1351
June	395	49	24	468	<b>444</b>	1795
July	577	238	0	815	<b>815</b>	2610
August	0	0	0	0	<b>0</b>	2610
September	0	0	0	0	<b>0</b>	2610
October	0	0	0	0	<b>0</b>	2610
November	0	0	0	0	<b>0</b>	2610
December	0	0	0	0	<b>0</b>	2610
<b>Total</b>	<b>248</b>	<b>121</b>	<b>10</b>	<b>379</b>	<b>369</b>	369

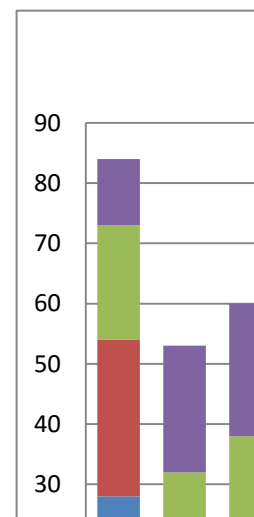
**Feedback data**

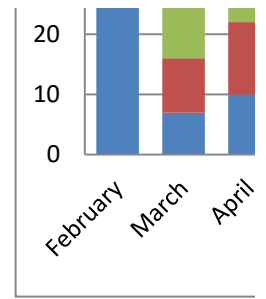
Overall experience

	Poor			Exellent		Total	No data for January a:
	1 (Poor)	2	3	4	5 (Exceller)		
January	0	0	0	0	0	<b>0</b>	
February	0	0	0	5	46	<b>51</b>	90%
March	0	0	1	8	34	<b>43</b>	79%
April	0	0	0	4	36	<b>40</b>	90%
May	0	0	1	2	13	<b>16</b>	81%
June	0	0	1	4	20	<b>25</b>	80%
July	0	0	1	1	8	<b>10</b>	80%
August						<b>0</b>	
September						<b>0</b>	
October						<b>0</b>	
November						<b>0</b>	
December						<b>0</b>	
<b>TOTAL</b>	<b>0</b>	<b>0</b>	<b>4</b>	<b>24</b>	<b>157</b>	<b>185</b>	85%

**Demographic** (from questionnaires)

	Under 18	18-45	45-65	Over 65
February	28	26	19	11
March	7	9	16	21
April	10	12	16	22
May	0	3	7	5
June	2	3	10	9
July	1	0	5	6
August				
September				
October				
November				
December				



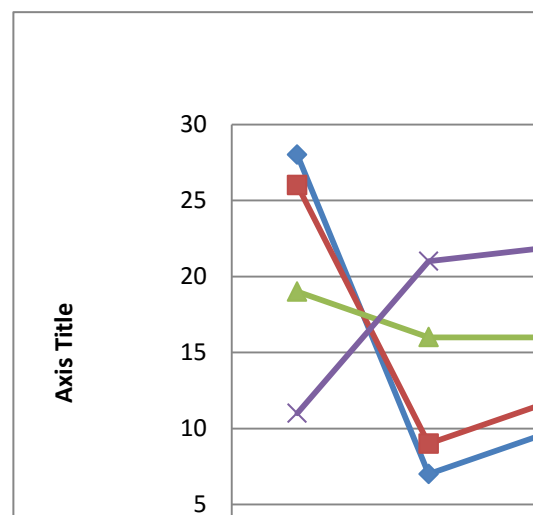
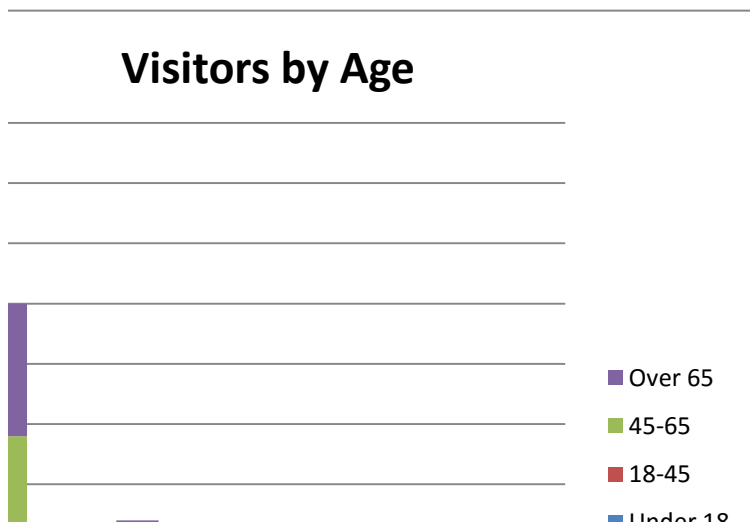


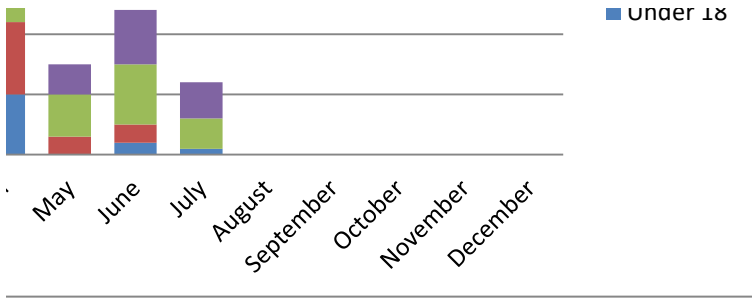
**Location**

2015 difference		ave % diff	40%
<b>117</b>			
<b>237</b>	112	47%	
<b>232</b>	94	41%	
<b>270</b>	89	33%	

s the Museum was closed

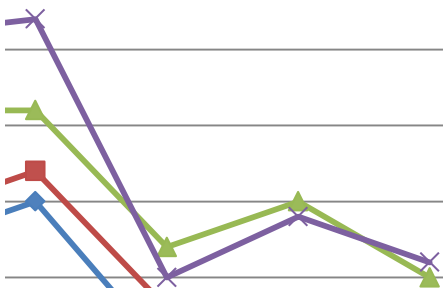
"it was all good"

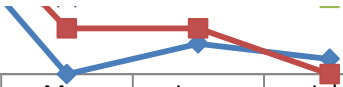




	0	February	March	
Under 18		28	7	
18-45		26	9	
45-65		19	16	
Over 65		11	21	

## Visitors by Age





April	May	June	July	August	September	October	November	December
10	0	2	1					
12	3	3	0					
16	7	10	5					
22	5	9	6					