

# Community Led Local Development (CLLD) Pre application guidance

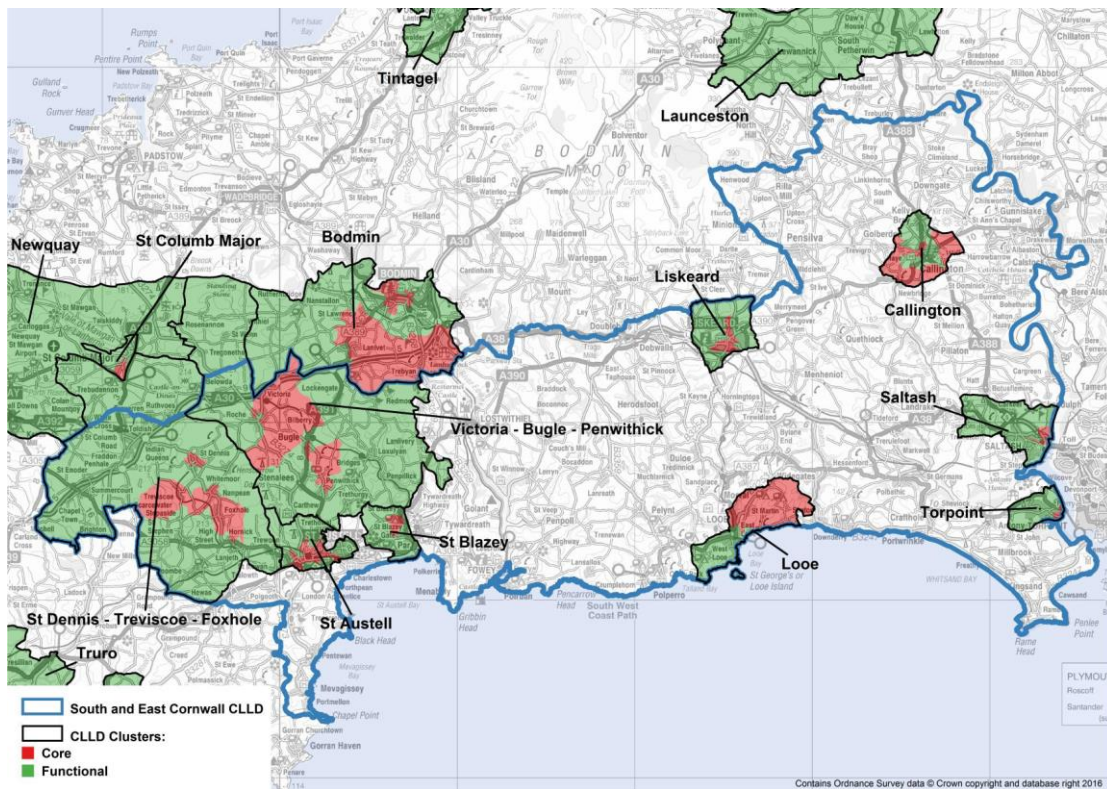
## South & East Cornwall Local Action Group (SELAG)

### ***What is the aim of CLLD funding?***

CLLD aims to provide pathways to better economic opportunities for people and businesses in the CLLD areas of South & East Cornwall, strengthening local availability of employment, skills and training, and developing the ability of residents in CLLD areas to access them.

### ***Where exactly can projects get funding?***

CLLD prioritises funding in areas of Cornwall identified as being within the 30% most deprived by reference to the [2010 Index of Multiple Deprivation \(IMD\)](#). These areas are defined as **Core** Lower Super Output Areas (LSOAs). LSOAs are defined geographical areas for the purpose of identification and statistical analysis. If you are interested in how LSOAs are determined, please visit the [Office for National Statistics](#) website. The map below identifies the locations of these Core LSOAs as the red areas. The blue line is the perimeter of the SELAG area. Projects can also be located in the **Functional** LSOAs (the green areas in the map below) as long as the benefits accrue to people in the Core LSOAs.



### ***What projects can CLLD support?***

CLLD funded activity includes support for skills development, initiatives to tackle personal financial management, self-esteem, preparation to move towards work, access to employment, training, sector development, IT solutions, new transport ideas, support for social enterprise, local business growth and innovative economic development activity tailored to the local area and each target community's need.

CLLD seeks to encourage new ideas: new techniques, new technologies, new knowledge, new approaches - as well as apply existing ideas in new areas. The programme sets out to address the big issues in specific areas in relation to employment, skills and work using a fresh approach.

For example:

- Creating more jobs locally;
- Helping businesses stay viable;
- Helping businesses to grow;
- Helping people to start a business;
- Supporting people to get the skills they need to access jobs;
- Helping build confidence to get into training;
- Opportunities for young people to find training and work locally;
- Helping develop skills, qualifications and careers once employed.

### ***How do I know if my project idea is eligible for CLLD?***

There are eligibility criteria that must be passed before a project can be submitted to the LAG for consideration. These are:

1. The project must benefit people or businesses based in one or more of the 30% most deprived areas (the Core areas) in Cornwall either because it is located in one of these Core LSOA areas or because it is located in an adjacent Functional LSOA area *and directly benefits* one or more deprived Core areas. Projects can cover more than one LAG area, e.g. a service operating in several areas of Cornwall.
2. To find out whether your project is located in a Core of Functional area visit [www.magic.gov.uk](http://www.magic.gov.uk) and follow the instructions below:
  1. Click on 'Get Started'
  2. Agree the terms of use
  3. In the Table of Contents on the left, expand 'Administrative Geographies'
  4. Then expand 'Other Administrative Boundaries'

5. Select the box for 'Lower Super Output Areas with Rural Def 2011'
6. Enter your postcode or grid reference in the search box at the top of the page and click on magnifying glass
7. Click the 'i' (for information) from the feature tools at the top of the page
8. Click on highlighted blue area
9. A message confirming the relevant LSOA area will pop up

To be eligible the LSOA code must be one of the following:

### Core and Functional LSOAs by ONS name and number

Core IMD LSOAs	Adjacent Functional LSOAs	Nearby Functional LSOAs
013B E01018751	013A E01018750	037B E01018773
017A E01018767	013C E01018752	037D E01018776
017C E01018771	016B E01018768	022B E01018787
017B E01018770	016C E01018769	026A E01018789
028E E01018774	017D E01018772	025B E01018788
026D E01018793	037C E01018775	025D E01018794
039B E01019041	026C E01018792	022D E01018796
039C E01019042	025A E01018786	036A E01019013
039A E01019033	026B E01018791	030D E01019072
039F E01019046	025C E01018790	019E E01019064
038D E01019047	038C E01019045	019F E01019065
031A E01019056	039D E01019043	012C E01018801
030B E01019070	038B E01019034	012D E01018802
024D E01019055	039E E01019044	029C E01018799
030A E01019069	038A E01019032	
029A E01018797	031B E01019057	
024B E01019053	031C E01019058	
027D E01019074	031D E01019059	
	024C E01019054	
	030C E01019071	
	030E E01019073	
	019D E01019063	
	029D E01018800	
	029B E01018798	
	027F E01019076	
	024A E01019052	
	027E E01019075	
	027B E01019036	



3. The project must provide novel or 'innovative' economic development support to the local community or business(es) in the target area; it cannot directly duplicate existing schemes (e.g. mainstream ERDF programmes) nor can mainstream European funding (i.e. ERDF, ESF & RDPE) be mixed or combined with CLLD funding *within the same project*. It may, in some circumstances, be possible to fund adjacent projects or fund activity (e.g. ESF funded skills development) that is located in a mainstream funded project (e.g. an ERDF funded capital build development) as long as they are not technically the same project claiming the same outputs.

The project must support the ambitions of the area's CLLD Local Development Strategy (LDS) and deliver activity that supports one or more of the Strategy's Objectives; these are set out in the LDS. If the project covers more than one LDS area it must support objectives from each area involved.

For South & East the Objectives are:

1. Stimulating new and existing local businesses to provide local work opportunities including by making them as competitive as possible
2. Maximising the potential of proposed developments and activities in the Mid Cornwall Economic Corridor for the benefit of CLLD areas
3. Developing community led initiatives/ community based projects to work with people to build capacity, confidence and skills for progression towards employment and training
4. Raising community aspirations by targeting locally distinctive initiatives to achieve an economic step change (an objective in its own right and an underpinning objective)
5. Addressing transport barriers that prevent people from accessing work and training opportunities (a cross cutting theme)

4. The project must deliver one or more of the CLLD Programme Outputs (and/or for ESF, Programme Results) and represent good value for money. The Outputs are:

CORNWALL CLLD ESF Outputs and Results	
<b>Outputs</b>	
Number of participants	
Participants that are unemployed including long-term unemployed	
Participants that are inactive	
Participants that are aged over 50	
Participants that are from ethnic minorities	
Participants that have disabilities	
<b>Results</b>	
Participants in education or training on leaving	
Unemployed participants in employment, including self-employment on leaving	
Inactive participants into employment or job search on leaving	
CORNWALL CLLD ERDF Outputs	
<b>Outputs</b>	
Number of enterprises receiving support	
Number of new enterprises receiving support	
Employment increase in supported enterprises	
Number of potential entrepreneurs assisted to be enterprise ready	
Square metres public or commercial building built or renovated in target areas	

5. The project must be delivered during the CLLD activity delivery timeframe; i.e. before September 2022.



**European Union**  
European Structural  
and Investment Funds

## ***Application Process***

A single application form is required for grants of up to £2,500.

Where grants with a value above £2,500 are sought, the completion of an Expression of Interest (EOI) will first be required to confirm eligibility of the project. The EOI requests an outline description of the project idea, where the project activity will happen, what it will achieve, what the outputs will be, who benefits, how much it is likely to cost, etc.

The Project EOI will then be assessed by the CLLD Team. If the project passes the EOI stage successfully the applicant will be invited to complete a 'Full Application', providing a more detailed description of the project. This Full Application will then be assessed by the CLLD Team to ensure sufficient and compliant information has been provided before being submitted for a decision. Decisions on applications up to £10,000 will be ratified by the CLLD Executive Group with larger projects being tabled at CLLD executive Group meetings for decision making. If the project is approved Cornwall Development Company, as the 'Accountable Body' for the CLLD Programme, will issue a grant offer letter to the applicant.

### ***To learn more about making an application or joining a CLLD Executive Group, please contact:***

CLLD Facilitator, South & East Cornwall area:

[Ffion.stanton@cornwalldevelopmentcompany.co.uk](mailto:Ffion.stanton@cornwalldevelopmentcompany.co.uk)

CLLD Coordinator, Atlantic & Moor and South & East Cornwall:

[Jon.teague@cornwalldevelopmentcompany.co.uk](mailto:Jon.teague@cornwalldevelopmentcompany.co.uk)

